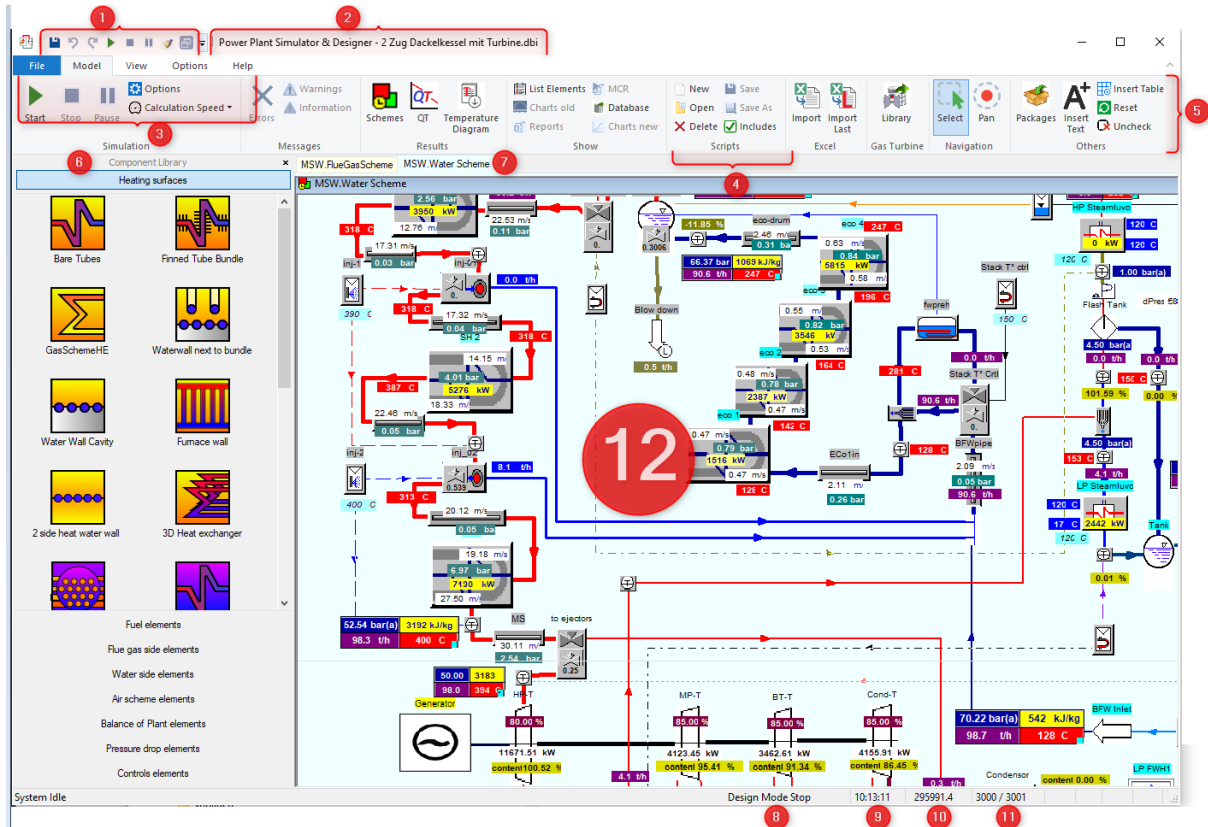


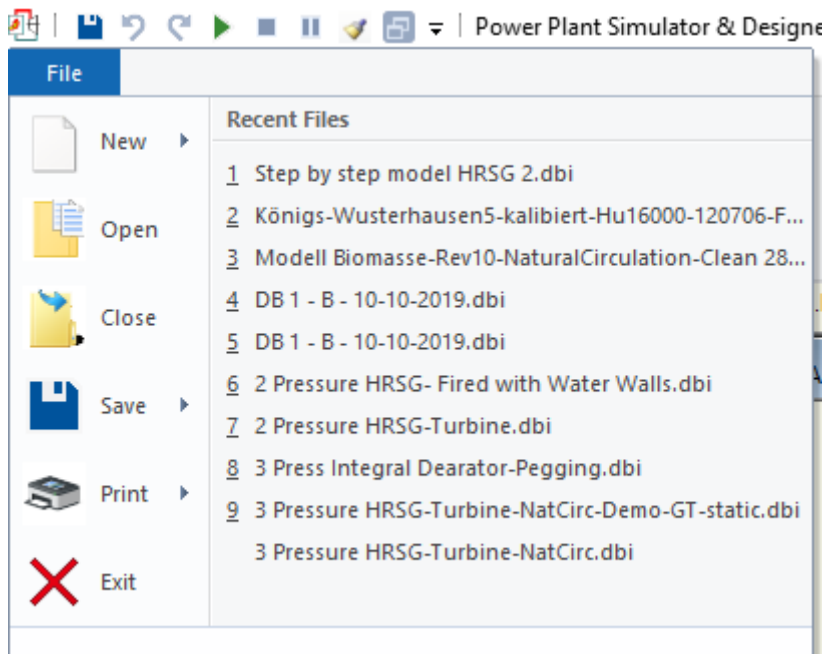
Improvements for release 2020

1.	Ribbon.....	2
2.	Restore button in quick menu	5
3.	Panning	5
4.	Strings in Scripts	6
5.	Faster calculation	7
6.	Fines along tubes.....	7
7.	Tube wall temperature in furnace walls	8
8.	Many forbidden connections are blocked	8
9.	And many other small improvements	8

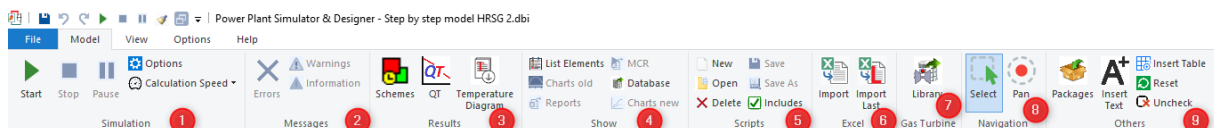
1. Ribbon



1. Quick menu bar (Start / Stop, **Minimize**)
2. Title bar
3. Menu tabs
4. Ribbon
5. Ribbon groups
6. Component library
7. Scheme Tabs
8. Status bar Mode
9. Time for dynamic
10. Step counter / Max Steps
11. Element with drag and drop in Scheme
12. Calculation Scheme

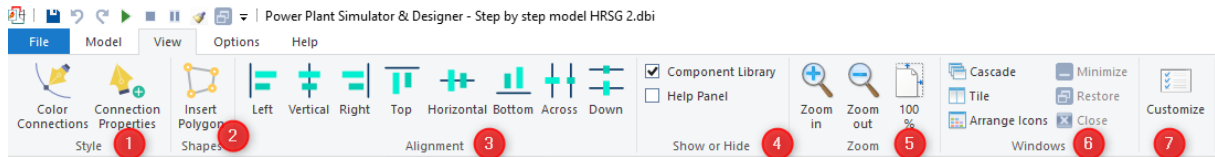


File Menu



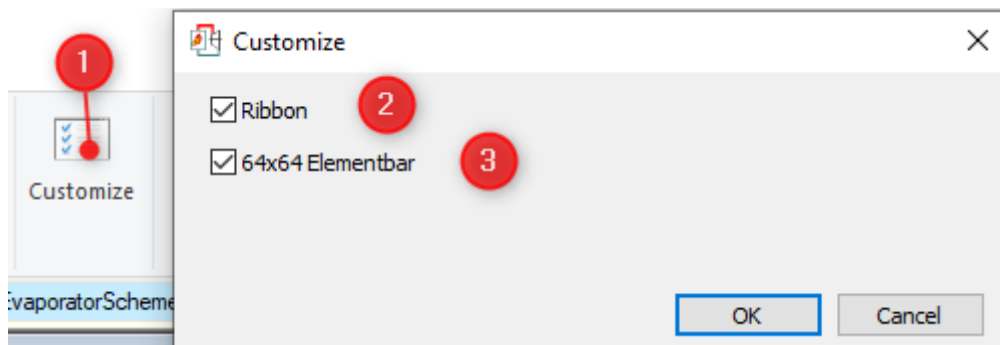
Ribbon Groups -> Tab Model

1. Simulation (Start / Stop button and **Options** Button)
2. Messages
3. Results
4. Show
5. Scripts
6. Excel
7. Gas Turbine
8. Navigation
9. Others



Ribbon Groups -> Tab View

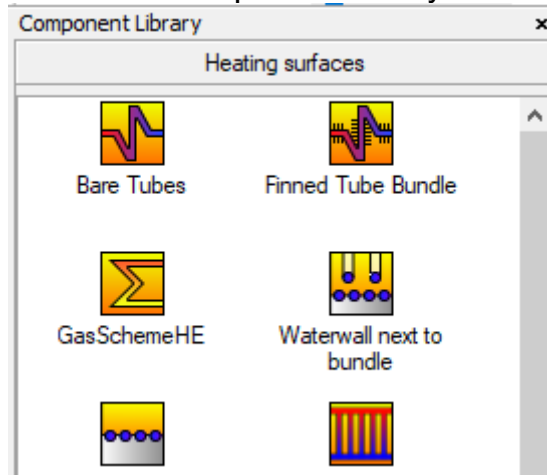
1. Style
2. Shapes
3. Alignment
4. Show or Hide
5. Zoom
6. Windows
7. Customize

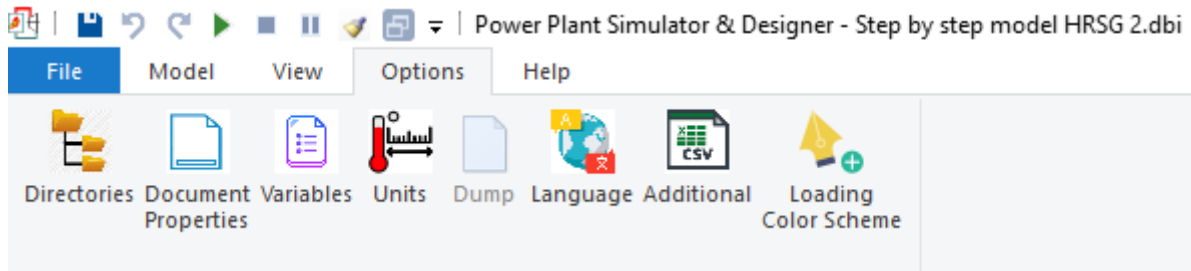


2 Here can be the Ribbon switched off

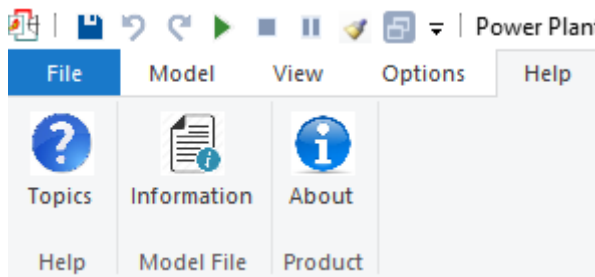


3 32 x 32 Component library Icons



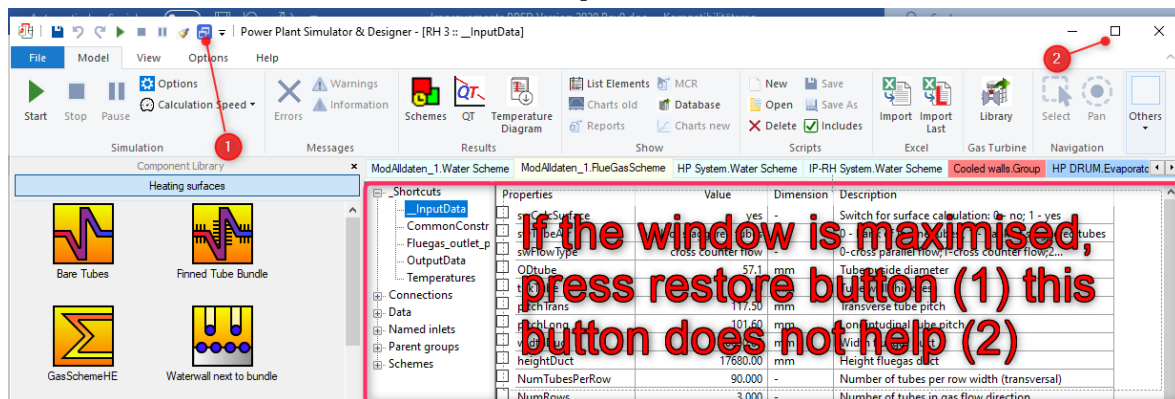


Ribbon -> Tab Options



Ribbon -> Tab Help

2. Restore button in quick menu



3. Panning

Moving the calculation scheme with the mouse

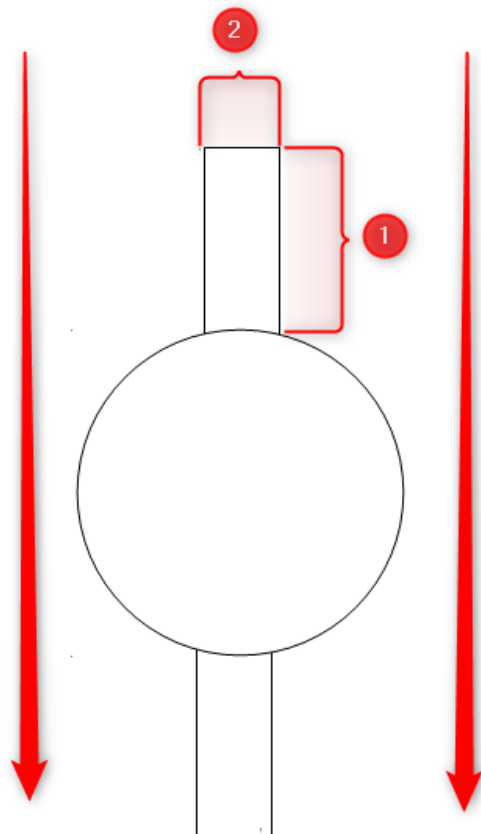


5. Faster calculation

Up to 50% faster calculation due to increasing speed of graphical user interface (GUI) and optimization of static memory use.

6. Fines along tubes

TypFin	Fins along tubes	-	fin type:0-spiral solid,1-circle soli
heightFin	16.0	mm	Fin height
thkFin	1.2	mm	Fin thickness
MatFin	X 12 CrMo 9 1	-	Fin material



Flue gas along the fins

The calculation is according Russian Standard

7. Tube wall temperature in furnace walls

<input type="checkbox"/>	tempMetOut	322.1	C	Outlet temperature of tube wall
<input type="checkbox"/>	tempMetIn	321.1	C	Inlet temperature of tube wall

8. Many forbidden connections are blocked

In older versions of PPSD there was e.g. possible to have many inflow connections in an heat exchanger element, but this was wrong, normal elements are not working as mixers, now it is blocked, only the first connection is possible.

9. And many other small improvements

For example new values in the flue gas scheme test point

<input type="checkbox"/>	abs Humidity Vol based	62.75	g/m ³ dry	absolute Humidity Volume based
<input type="checkbox"/>	absoluteHumidity	47.99	g/kg	absolute humidity
<input type="checkbox"/>	Relavtive Humidity Gas	0.47	%	relative humidity Gas
<input type="checkbox"/>	Partial Pressure Moisture	73.4	mbar	Partial Pressure Moisture