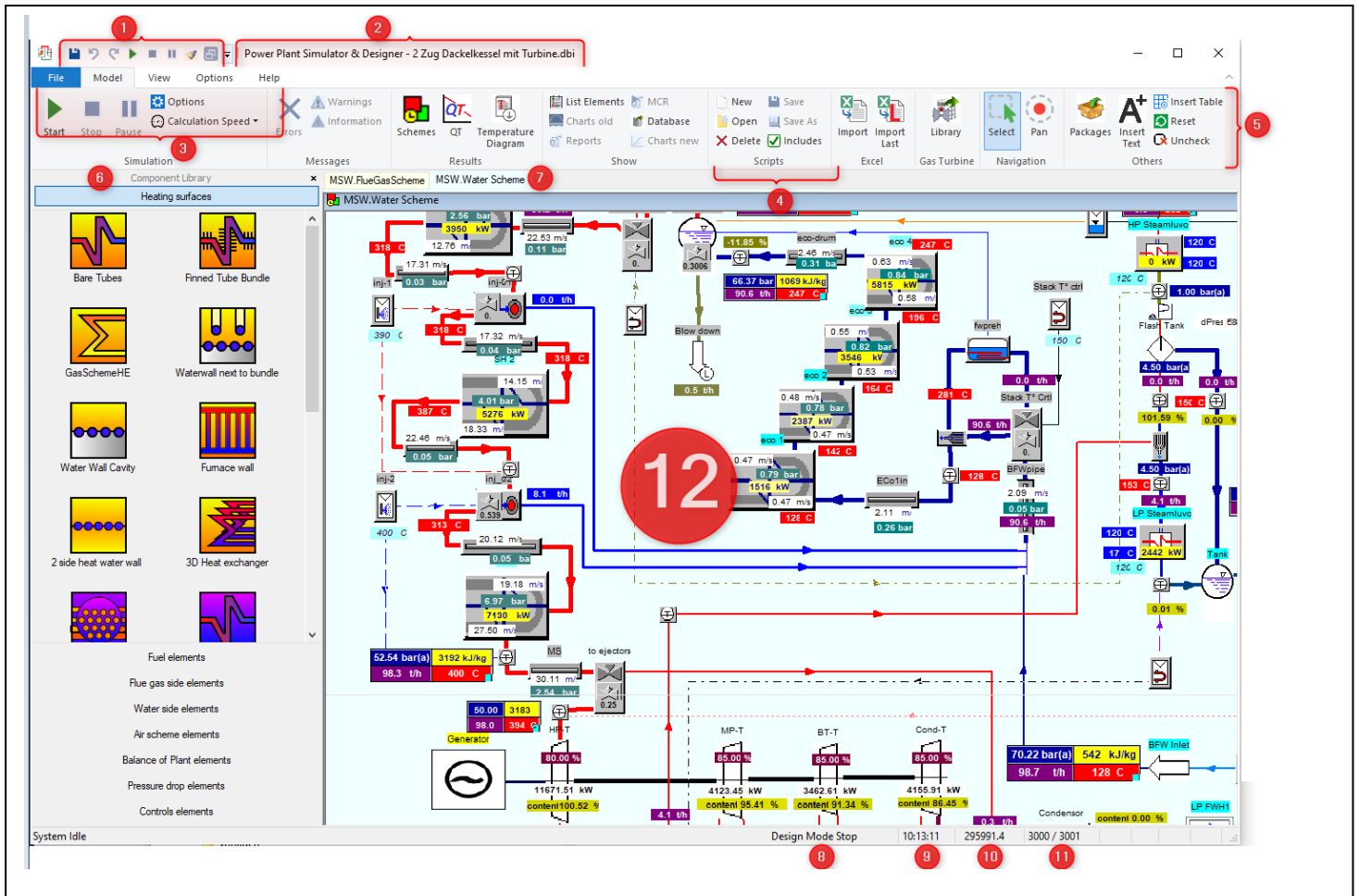
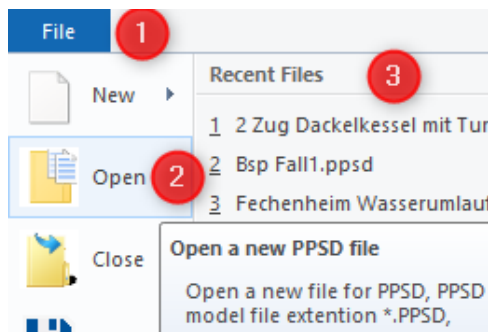


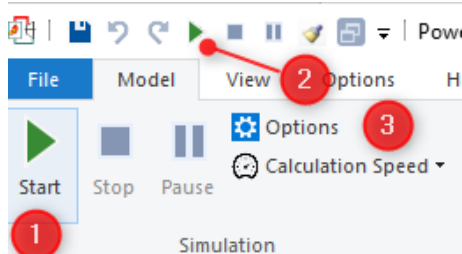
PPSD Quick Reference Card



Getting Started





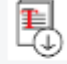
- 1 Tab -> File
- 2 Open Button
- 3 Or open a recent file



- 1 Start Button
- 2 Start Button
- 3 Calculation Options

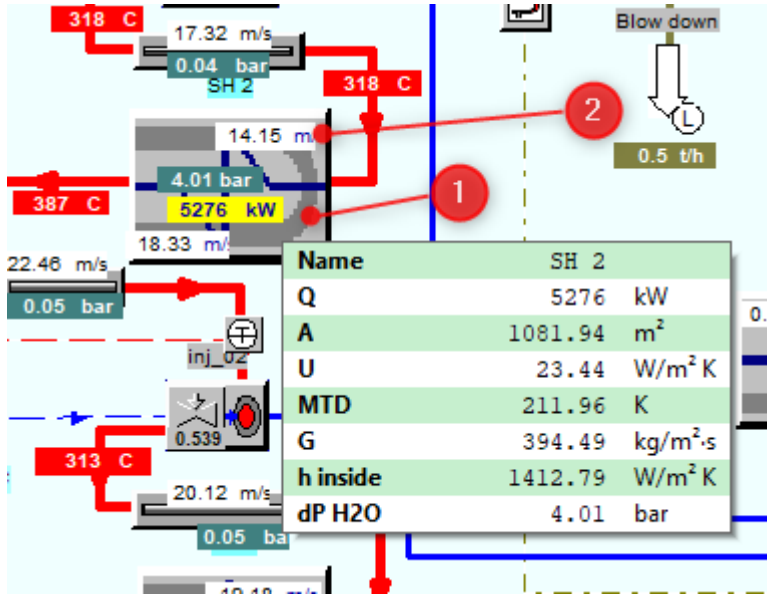
1. Quick menu bar (Start / Stop, **Minimize**)
2. Title bar
- 3 Menu tabs
- 4 Ribbon
- 5 Ribbon groups
- 6 Component library
- 7 Scheme Tabs
- 8 Status bar Mode
- 9 Time for dynamic
- 10 Step counter / Max Steps
- 11 Element with drag and drop in Scheme
- 12 Calculation Scheme

Results

Schemes QT Temperature Diagram

Results



SH 2 :: _InputData

Properties	Value	Dimension	Description
<input type="checkbox"/> swCalcSurface	yes	-	Switch for surface calculation: 0 - no; 1 - yes
<input type="checkbox"/> A	1081.94	m ²	Heating surface
<input type="checkbox"/> lengthTube	120585.13	mm	Tube Length
<input type="checkbox"/> swTubeArr	bank of in-line tubes	-	0 - bank of in-line tubes , 1 - bank of staggered tubes
<input type="checkbox"/> swFlowType	cross counter flow	-	0-cross parallel flow;1-cross counter flow;2-cro...
<input type="checkbox"/> ODtube	51.0	mm	Tube outside diameter
<input type="checkbox"/> thkTube	6.5	mm	Tube wall thickness
<input type="checkbox"/> pitchTrans	130.00	mm	Transverse tube pitch
<input type="checkbox"/> pitchLong	120.00	mm	Longitudinal tube pitch
<input type="checkbox"/> widthDuct	7440.00	mm	Width fluegas duct
<input type="checkbox"/> heightDuct	6000.00	mm	Height fluegas duct
<input type="checkbox"/> NumTubesPerRow	56.000	-	Number of tubes per row width (transversal)
<input type="checkbox"/> NumRows	20.000	-	Number of tubes in gas flow direction
<input type="checkbox"/> NumRowsPar	1.00	-	Number of rows carrying flows on steam/water side
<input type="checkbox"/> usage factor	1.00	-	Usage factor (surface area factor)
<input type="checkbox"/> MatTube	15 Mo 3	-	Tube wall material
<input type="checkbox"/> angleGas	0.00	Deg	Gas flowing angle 0 degree=perpendicular flo...
<input type="checkbox"/> distTb-W	0.00	mm	Distance from one bend to wall
<input type="checkbox"/> fouling outside	0.0000	m ² K/W	Thermal resistance of fouling outside tubes